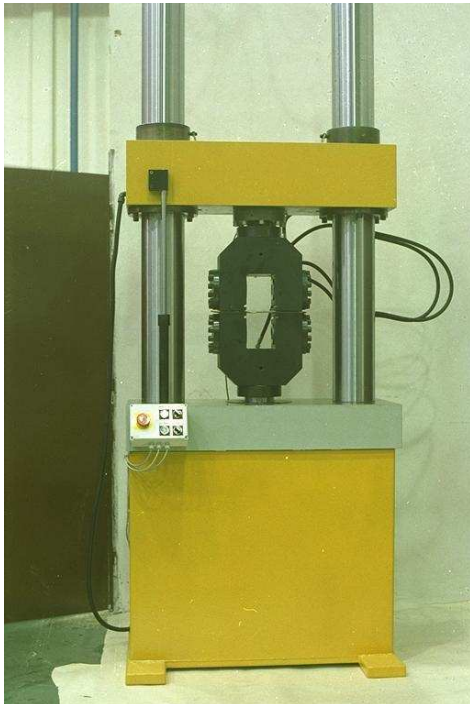




# Loading Frame Series FU

## Product description



Loading frames FU intended for built-in of loading hydraulic actuator are intended for dynamic and static loading and they are delivered with hydraulic or mechanical control of fixing of upper cross beam. Shifting of upper beam is hydraulic at both types of frames. Frames are ready for built-in of hydraulic actuators AH and AG series.

**Type Identification Key** FU 250 H — H - hydraulic releasing of upper cross beam  
M - mechanical fixing/releasing of upper cross beam  
— nominal load (kN)

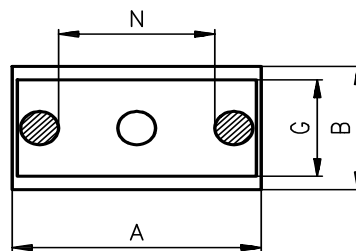
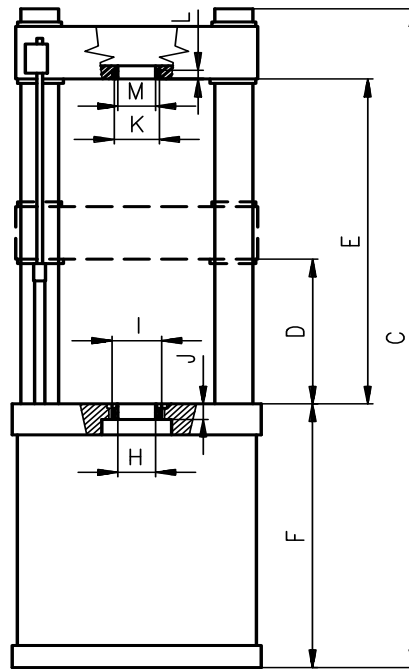
### Basic Configuration

Loading frame without hydraulic actuator and load cell. For type H including high-pressure power unit for cross-beam releasing.

### Accessories and Complements

- Hydraulic actuator AH or AG
- Load cell including connection adapter
- Damping blocks
- Grips, T-Slot Plate, microclimate and other

## Specifications



Type		FU 63	FU 160	FU 250	FU 400
nominal load	kN	63	160	250	400
A	mm	720	860	1100	1100
B	mm	400	460	750	750
C	mm	2300	2550	2880	2880
D	mm	300	360	360	360
E	mm	1100	1260	1500	1500
F	mm	1000	1000	1000	1000
G	mm	300	350	480	480
Ø H	mm	75	125	190	190
Ø I	mm	100/6xØ11	160/12xØ11	224/12xØ17	224/12xØ17
J – piston rod extension	mm	40	70	100	100
Ø K	mm	86/8xM6	130/8xM10	194/8xM16	235/8xM20
L	mm	12	16	25	35
Ø M	mm	70	100	145	175
N	mm	480	520	620	620
weight app.	kg	450	825	1850	1950